

Store Keeper POS™ for Beverage Retailers

The screenshot displays the 'The Liquor Store' POS interface. At the top, there are control buttons for 'Birthdate Entered', 'Print', 'Cancel', 'Up', 'Down', and 'Exit'. Below these is a transaction summary table:

Quantity	Description	Price	Discount	Amount
1	WINE CABERNET MONDAVI 1.5 L	12.99	0.00	12.99
1	BEER SAMUEL ADAMS LAGER 6 PACK	6.00	0.00	6.00
1	BEV MIXERS SCHWEPES TONIC 1 LITER	1.30	0.00	1.30
1	MISC SNACKS LAYS - SMALL	0.59	0.00	0.59
1	LIQUOR VODKA ABSOLUT 375 ML	9.00	0.00	9.00
Sub-Total				53.87
Tax				2.69
Total				56.56

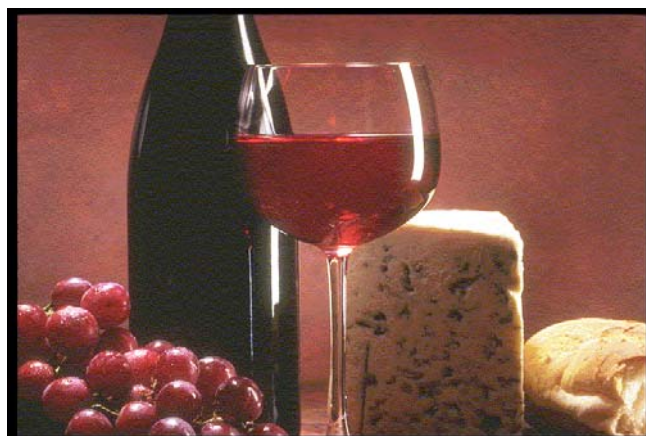
Below the table is a menu of beverage categories represented by icons: Liquor, Beer, Wine, Beverage, and Miscellaneous. To the right of these are various system functions: Departments, Inventory Lookup, Check Sale, Register Buttons, Quantity, Other Tenders, Suspend/Recall, Clear Sale, Credit Card, Manager Menu, Customer Account, and Cash Sale. A 'Bar Code Scan' button is also visible at the bottom left of the menu area.



CPA Technology
Advisor
2002-2007

Since 1986, InfoTouch® POS applications have been successfully solving the business issues facing Beverage Retailers and Liquor Stores. Store Keeper POS uses intuitive graphics at the POS to reduce training time and cost, speed checkout times and enhance your customer service. The software helps stores to control inventory costs while minimizing annoying out of stock events. Store Keeper POS software is based on Store Manager ES, which has been certified to meet the Payment Card Industry Data Security Standard by Visa. The fully featured Store Keeper POS is offered at a value price point.

Our Touch Screen POS Software is Well-Aged!





Register — The graphical user interface is second to none and helps cashiers ring up items quickly and more accurately than keyboard-based peers. You can ring up items via four methods: scanning, UPC/SKU number entry, item button entry, and by description or a ‘wildcard’ search. Full Customer Sales history is available at the POS, and unique transactions like Quotes, Special Orders and Suspend/Resume are a standard part of this module. Integrated payment processing, including credit/debit/gift cards as well check verification and EBT, is a standard feature. Additional features include Gift Certificate tracking, incredibly easy cash draw reconciliation, integrated loyalty program, and age verification, including the ability to read drivers’ licenses.

Inventory — This module is the core of the POS application. The system updates quantities on hand for each inventory record in real-time. Additionally, each item can have a retail price plus 9 additional price levels and be sourced from up to 10 different vendors. You can maintain serialized inventory as well as a wide array of sophisticated pricing rules — such as 10% Off after purchasing 12 bottles of wine, Quantity unit pricing, Buy 1 Get 1 Free, Case Pricing, etc. Support for multiple units of measure enables stores to buy by the case and sell cases, six-pack, 12-packs, and singles. Additional functionality includes Kit/Explosion sales and tracking, Alternate Keys, and Open to Buy for departmental budget tracking and reporting. Bar code label printing functionality is available to print UPC Price Labels, Shelf Tags, and Received Item Price labels.



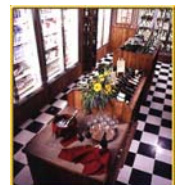
Customers — Sales history, integrated loyalty program, frequent shopper pricing, purchasing trends and Bad Check File maintenance are available within this module. You can use the Reports section of this module to print bar code labels, customer mailing labels based on shopping activity or inactivity. You can also use shopping patterns to generate email campaigns.

Employees — Time and attendance and gross wage calculations are at the center of the Employee Module. All employees can clock in/clock out through any register in the system while managers can monitor and adjust these ‘punches’ accordingly. In addition to hourly and salaried wage rates, the system calculates individual or group commission plans and spiffs by employee. Employee shift scheduling is also available.



Purchase Orders — Integrated with the Inventory module, purchase orders can be created automatically using the Min/Max/Reorder quantity scheme, Sales History, or by using criteria such as a preferred or specific vendor, lowest cost or fastest delivery time. You can also use handheld devices for Receiving and Receiving by Exception.

Reports — You have access to an enormous amount of detailed information with the 100+ reports that are standard with the system. Most reports have multiple search and sort criteria giving you maximum flexibility in analyzing your operations. All reports come with the option of viewing to screen, printing, or saving as a electronic file for export to other applications. In addition, the Store Keeper POS application comes with extensive documentation and integrated online help.



Why Touch Screen at the POS?



- ◆ *Reduced Training Cost/Time by 30% or more*
- ◆ *More Durable in Harsh Retail Environments*
- ◆ *No Wasted Counter Space*
- ◆ *Software Changes and Updates can be Downloaded—no more hassles with replacing and removing key checks*
- ◆ *33–50% checkout throughput improvement*
- ◆ *Reduced errors at POS*
- ◆ *Improved and Enhanced customer service*