

TRIM-P.O.S.TM

FLASHPOINTTM

The screenshot displays the TRIM-P.O.S. Flashpoint software interface. On the left is a keypad with buttons for seat selection (*1-6, Seat -, Seat +, Seat ?), transaction types (Pull Down, Drive Thru, Bar, House Checks, Dine In, Delivery, Pick Up, Counter), and system functions (Clear Order, System, Delete Last, Driver Return, Service, Print Check, Edit Check, Close Check, Fire). In the center is a table showing the current order:

S*	Name	Price
1	Small, Coke	9.00
1		

Below the table, the 'Total Order' is 9.72. On the right is a 'MAIN' menu window with two tabs: 'Bar' and 'Pizza'. The 'Bar' menu includes Turkey Sandwich, Prime Rib, Perogies, Small Coke, Apple Pie, \$5 Coupon, and Gift Cert. The 'Pizza' menu includes Hamburger, Spaghetti, Chicken Wings, Coffee, Cheesecake, Senior Disc., and Redeem Cert.

WWW.TRIMPOS.NET

TRIM-P.O.S.TM Software Corp.

Bringing You Quality Software Since 1980

Order Entry



Flashpoint's POS Software offers powerful functionality with features that greatly enhance the ease of order entry. Once you have integrated Flashpoint™ into your establishment, you will immediately gain incredible controls, increase your profits and greatly reduce employee errors.

Floor Plans



Like all features in Flashpoint™, the floor plan screen is user definable. It also gives the server a quick method of transferring or combing tables.

Editing the order



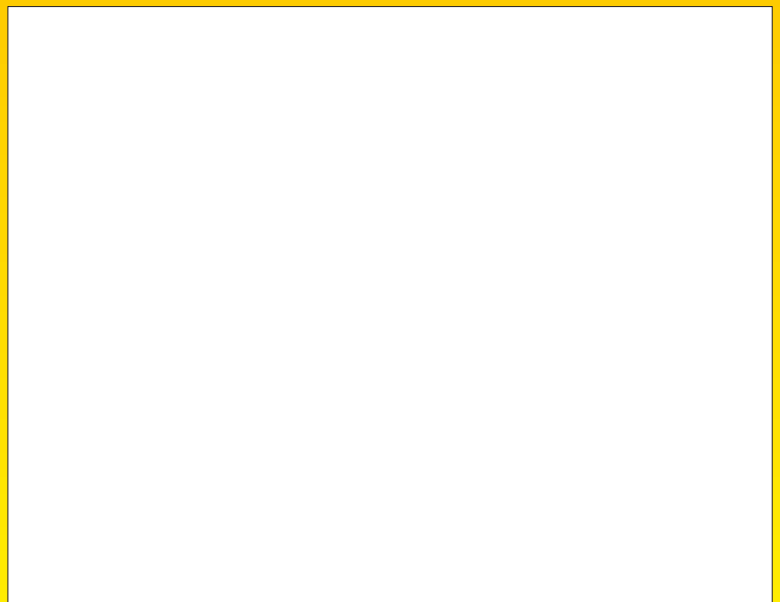
The edit check screen gives the user the capabilities of changing seats that items are on, combining seats, changing modifiers and editing items/modifiers. All with ease.

Company

Written in 1980 by a restaurateur, Flashpoint™ understands and addresses the challenges that face the hospitality industry and creates solutions that address these challenges. Since its conception, Flashpoint™ has been committed to providing reliable, powerful, flexible and easy to use point of sale software solutions for key names in the Hospitality industry, including KFC®, Taco Bell®, Pizza Hut®, A&W®, Aurelio's Pizza®, and Best Western®, just to name a few.

The comprehensive suite of Flashpoint™ POS products and services will improve all facets of your hospitality operations. From mission-critical point of sale applications and back office management tools to enterprise-wide management solutions, Flashpoint™ is the leader in restaurant and retail POS. Whether you are looking for Table Service, Quick Service, Delivery, Golf Course Management, Motel, Retail or other point of sale solutions, Flashpoint™ POS is your solution.

Local Distributor



Employee Security

We believe that there is a need to have more than a few levels of employee security. Because of this belief, we have decided that as an alternative to matching employees to security levels, Flashpoint will allow you to set the functions that employees may use. Virtually every button in the system has the ability to enable or disable access to it. To speed up the setup process, FlashpointTM also allows you to copy employee setups from one employee to another.

Enterprise Management

Flashpoint's Enterprise Management solution gives you the power to exchange information between your corporate office(s) and remote stores by integrating corporate driven menu management, regional pricing, and data warehousing into one powerful package. The Enterprise Management Solution also gives you the ability to program POS setups, inventory, and employees from one central location, while being able to choose the destination for the data easily and efficiently.

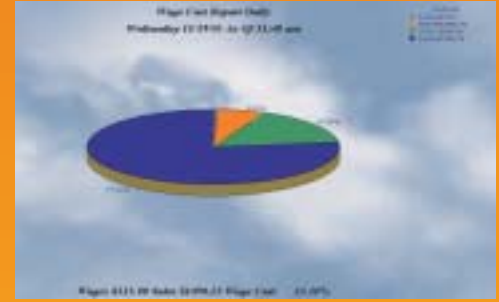
To complement the Enterprise Management System, FlashpointTM also offers a complete multi-vendor inventory, Multi Store Human Resources, and in-depth "above store" reporting.

Order Processing

Flashpoint's POS Software offers powerful functionality with features that greatly enhance the ease of order entry. Once you have integrated FlashpointTM into your establishment, you will immediately gain incredible controls, increase your profits and greatly reduce employee errors. Some of the powerful features include:

- * Multi-Concept
- * Fast and Effortless Setup and Installation
- * Increases Profits
- * Over 20 Years of Enhancements Included
- * Unmatched Performance and Functionality
- * Quick and Effortless Order Entry
- * Employee Training Completed in Minutes
- * User Customizable POS Interface
- * Dynamic Order Prompting
- * Handles all Pricing Requirements no Matter How Complex

Labor Management



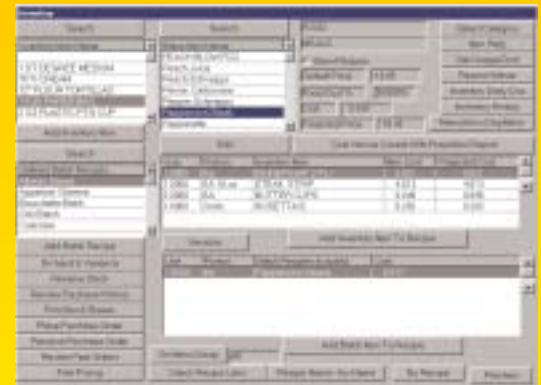
The labor management system included with FlashpointTM has a built in time clock, which produces many labor specific reports including a live wage cost report, individual time cards for employees and Time Clock Exports. The time clock also supports the ability to track employee breaks.

Liquor Pouring



Eliminate extensive tracking of bar items, reports etc. by using Flashpoint's integrated liquor and draft interface. By taking a single report, you can balance your bar at any time in just seconds.

Inventory



Main features of the live inventory include: Placing and Receiving Purchase Orders, Viewing Purchase Order History, Recording Waste, Extensive Inventory Reports, Exports, Maintains Batch Recipes, Sales Item Recipes Include Inventory Items and Batch Recipes, Projects the Cost and Sales Price of an Item, All Costs of Items are Updated upon Receipt of Purchase Order

ORDER ENTRY

- * Customizable table layout screen.
- * Automatically subtotals checks by seat and grand total for entire check.
- * Automatic gratuity function.
- * Move seats, items on seats quickly.
- * Change modifiers with the touch of a button.
- * Ability to split items between multiple customers (Ex. bottle of wine).
- * Tip declaration.
- * Server competitions.
- * Auto fire feature for course printing.
- * Server entered special requests.
- * Customer tabs.
- * Fast bar mode
- * Double/On The Rocks price bump keys.
- * Five User definable price levels.
- * Item & video help.
- * Item lookups.
- * Liquor / Draught pouring interface
- * Drive-thru option.
- * Print to up to 10 remote printers.
- * "Round" key to quickly order another round of drinks.
- * Order entry from a hand held or a station.
- * Hold button to temporarily hold an order without servicing.
- * Manager Refund button.
- * Items may be entered by means of a scale or Bar Code Scanner

SECURITY

- * Password and magnetic card security.
- * Employees may change their ID any time.
- * Every function in Flashpoint™ may be setup to allow or disallow access
- * Tests may be issued and scores stored
- * Termination and warning letters may be issued and stored by the system

SPECIALTY KEYS

- * All miscellaneous, coupon, discount and certificate keys are user-definable.
- * Discount by a predefined dollar value, open dollar value, predefined percentage or open percentage.
- * Discount by major and or minor category.
- * Unlimited number of discount, coupon and certificate keys.

Game Timers

- * Games may be setup by the minute or by the game.
- * Games may have different prices for number of players.
- * Up to five price levels per Game.
- * The game may be put onto a bar tab or table.

DELIVERY MANAGEMENT

- * Caller Id.
- * Customer history.
- * Re-order customers last order.
- * Delivery charges by street, quadrant or use a default delivery charge.
- * Option to automatically waive delivery charge when the order hits a pre-defined dollar value.
- * Minimum order charge.
- * Delivery receipts include directions to the house/street.
- * Multiple driver pay methods.
- * Cash Drops.
- * Multiple customer reports.

PAYMENT OPTIONS

- * Payment by cash, credit card, debit or on house account
- * Ability to apply multiple cash, credit card & house account payments on one check.
- * Automated credit card/debit authorization.
- * Entering a charge card may be done at the time of the sale or at any time.
- * Minimum Billing may be setup for Golf Couses.
- * Membership fees may be automatically issued by the membership types.
- * House account charges record a copy of the charged receipt for future verification.

MENU MANAGEMENT

- * Unlimited screens of items & modifiers per menu
- * Up to 10 different menus activated by the system, such as breakfast, lunch & dinner.
- * Modification of the menu from any station updates the menu on all stations.
- * Unlimited number of categories and sub-categories.
- * Automatically prompt unlimited number of modifier screens after selection of item.

TIME CLOCK

- * Time clock prints receipt for staff when the employee punches out.
- * Ten user-defined starting times may be setup saving thousand of dollars from servers punching in early.
- * Real-time wage cost report includes salaried employees as well as payroll taxes.
- * Wage cost report is in a simple to read graph format.
- * Schedules are simple to set up.
- * Schedules include your wage cost for the schedule based on the previous 8 weeks sales.
- * Many Time clock may be setup to reflect minors as well as different State/Province labor Laws.

INVENTORY

- * System will help with pricing based on the cost of a dish and preferred food cost.
- * Inventory automatically depletes stock, all the way down to the salt that is in a piece of bread.
- * You will always know what you should have in stock.
- * Daily, weekly and monthly variance reports based on what you should have in stock and what you actually do have in stock.
- * Stock sheets may be printed by the vendor with or without pricing.
- * You may view your purchase history by the vendor.

REPORTING

- * All reports in the system are fully customizable.
- * The number of reports you may create is limited only by your imagination.
- * Different reports may be broken out by individual order type, by the server, by the major and or minor category and by a user defined date or time range, can be based on one individual server and may summarized or detailed.
- * Just a few of the reports in the system include sales mix reports, deletion reports, tax reports, certificate reports, paid out reports, time clock reports, server reports, open / closed orders, coupons, discounts tips, customers, pool tables, daily and weekly doc, and a total-for-period report.
- * End of day report may be printed on a 40 column or full size printer

MISCELLANEOUS

- * Paid out types are user definable.
- * Message board available for daily specials / reminders.
- * E-mail - great for sending messages between employees or groups of employees.
- * View/print reservations up to a year in advance. Prints the reservations the day before and the day of as a reminder.
- * Print all the reservations for the day to a full size printer.
- * Scroll through reservations for the day on the screen.
- * Tee times for golf courses
- * Tournament and cart bookings can be done quickly and easily
- * Frequent customer allows for tracking customer spending, preferences and personal information.
- * Multiple frequent customer cards may be setup for each client (team Cards).
- * Items may be setup for diner redemption based on number of points.